



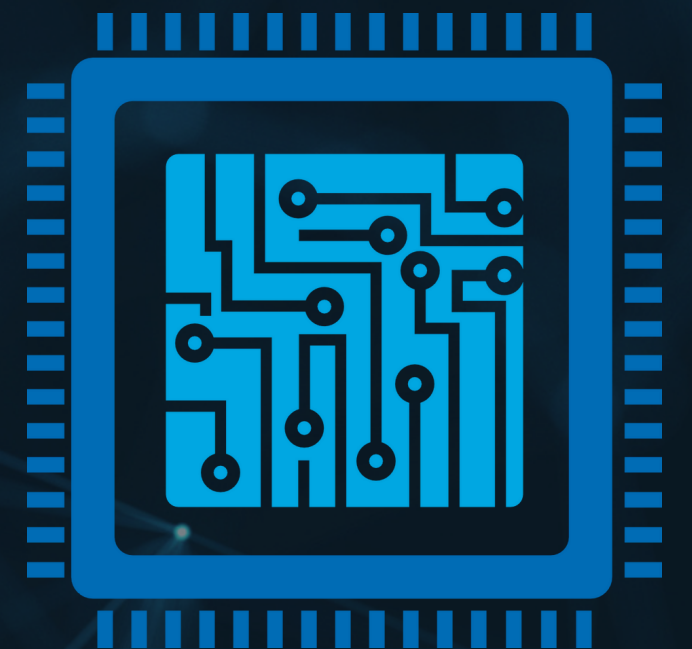
RUSHABH FOUNDATION

SKILL DEVELOPMENT PROGRAM

(LAPTOP REPAIR TRAINING)

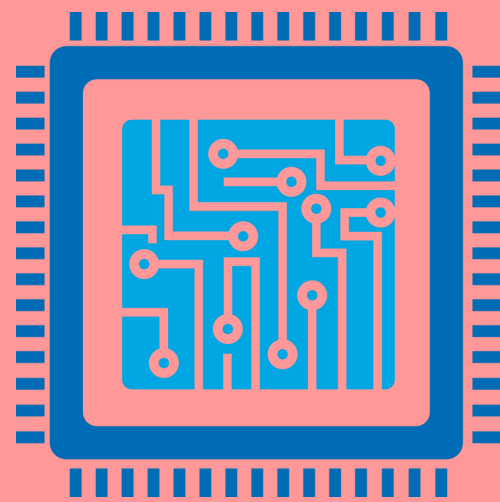
IN ASSOCIATION WITH

INDIAREFIX



VITAL POINT OF LAPTOP MOTHERBOARD TESTING

ACOK



SHORTING IN 19 VOLT PATH OR CLR

VCC/DCIN

ACDET/ACIN

REGN (6 VOLT)- BQ SERIES
VDDP(5VOLT)- ISL SERIES

NOTE:

BQ707, BQ727, BQ737, ISL6255 need ACOK LOW

BQ725, BQ735, BQ24715, BQ24717, BQ24780, BQ24738 , ISL9520 need ACOK HIGH

VITAL POINT OF LAPTOP MOTHERBOARD TESTING

ECON

→ VCC / AVCC (3V) LDO - (FROM STEP DOWN IC TO SIO CHIP)

→ EC_RESET# (3V)LDO

SS ON

→ 32.768KHZ

→ ACIN/ACOK - (FROM CHARGING IC TO SIO)

ALW_ON

→ ON/OFF TRIGGER -FROM POWER BTN TO SIO (3V TO 0V THEN AGAIN 3V) BECAUSE SOME BOARD 3V AND 5 VOLT IS SUSPENDED TILL SWITCH PRESS

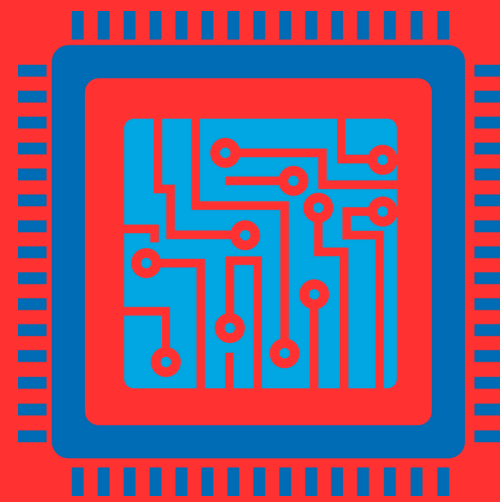
5V_3V_EN

→ BIOS

NOTE:

IN ADAPTER MODE ONLY ACIN AND VALID VCC REQ FOR EC_ON
IN BATTERY MODE BOARDS NEED TRIGGER FOR SS_ON/EC_ON

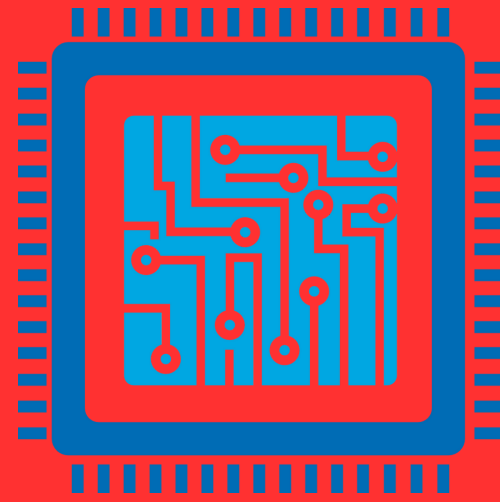
VITAL POINT OF LAPTOP MOTHERBOARD TESTING



RSMRST#

- VCC / AVCC (3V) LDO - (FROM STEP DOWN IC TO SIO CHIP)
- 32.768KHZ
- EC_RESET# (3V)LDO
- ACIN/ACOK- (FROM CHARGING IC TO SIO)
- LID OR HALL (3V) -FROM LID IC TO SIO
- ON/OFF TRIGGER -FROM POWER BTN TO SIO
- BIOS OR CONNECTION FROM BIOS (SPI) IC TO SIO
- BOARD_ID / BID
- PSID VALID
- CMP_OUT / VD_IN / VCIN / VCIN0 / V_PH / (THERMAL MONITOR VALID)
- V18R-ENE 9012 / 3.3V ENE 9022

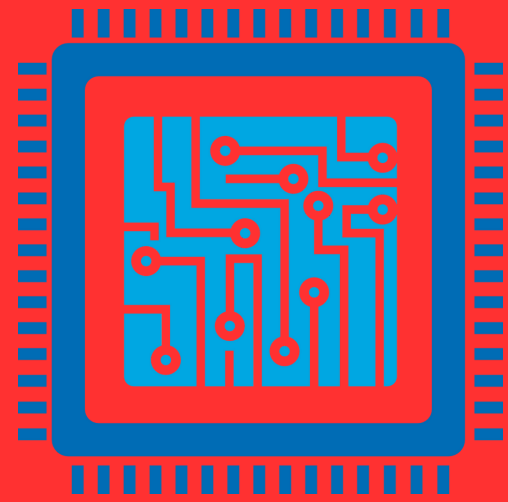
VITAL POINT OF LAPTOP MOTHERBOARD TESTING



PM_SLP_S4#
PM_SLP_S3#

- 3V_PCH (FROM STANDBY CIRCUIT TO PCH)
- VCCRTC OR CIRCUIT VALID
- VCCDSW3.3 (AT PCH)
- VCCSPI / 3D3V_SS_PCH (AT PCH)
- VCCSUS3_3 (AT PCH)
- BIOS/ SPI
- PWRBTN# /PBTN_OUT# FROM SIO TO PCH
- LID OUT# FROM SIO TO PCH
- PCH_DPWROK FROM SIO TO PCH
- ACPRESENT FROM SIO TO PCH
- RSMRST#

VITAL POINT OF LAPTOP MOTHERBOARD TESTING



SUSP# (S0)

SYS_ON (S3)

→ **PM_SLP_S4/PM_SLP_S3**

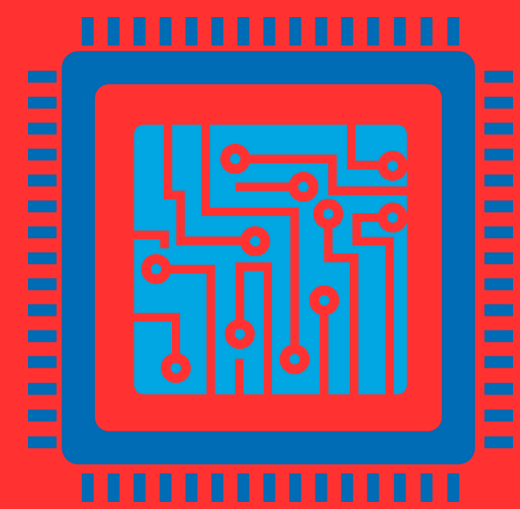
→ **SHORTING IN SUSP# AND SYSON#**

→ **BIOS**

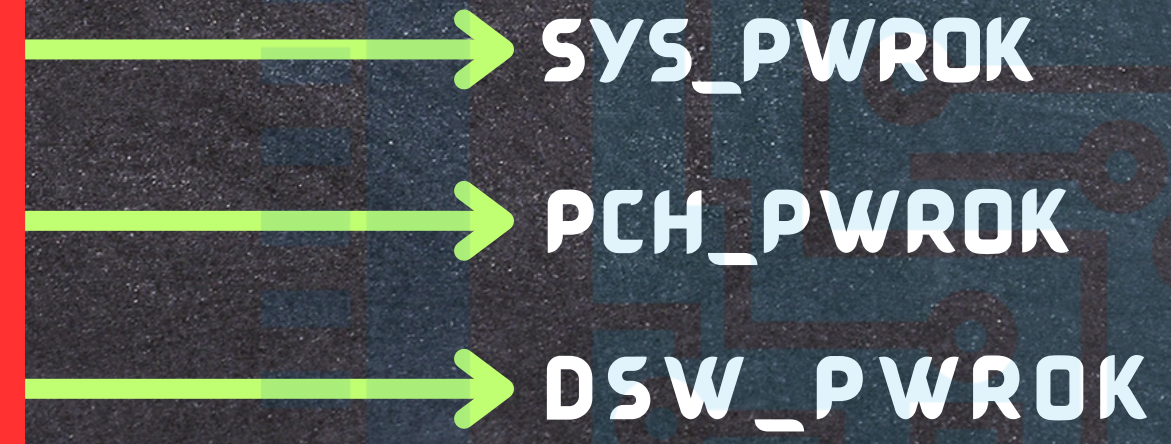
→ **S10**

→ **32 KHZ RTC CRYSTAL**

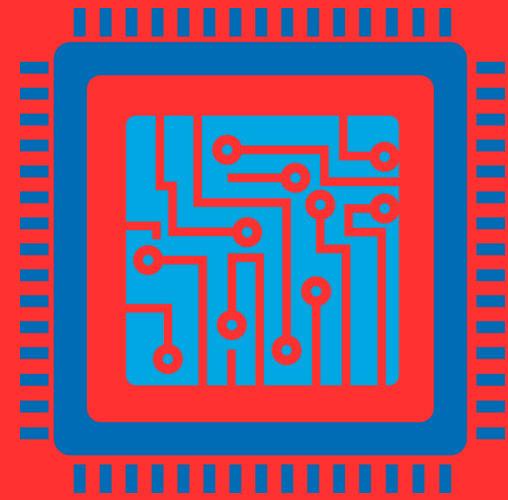
VITAL POINT OF LAPTOP MOTHERBOARD TESTING



PLT_RST#



VITAL POINT OF LAPTOP MOTHERBOARD TESTING

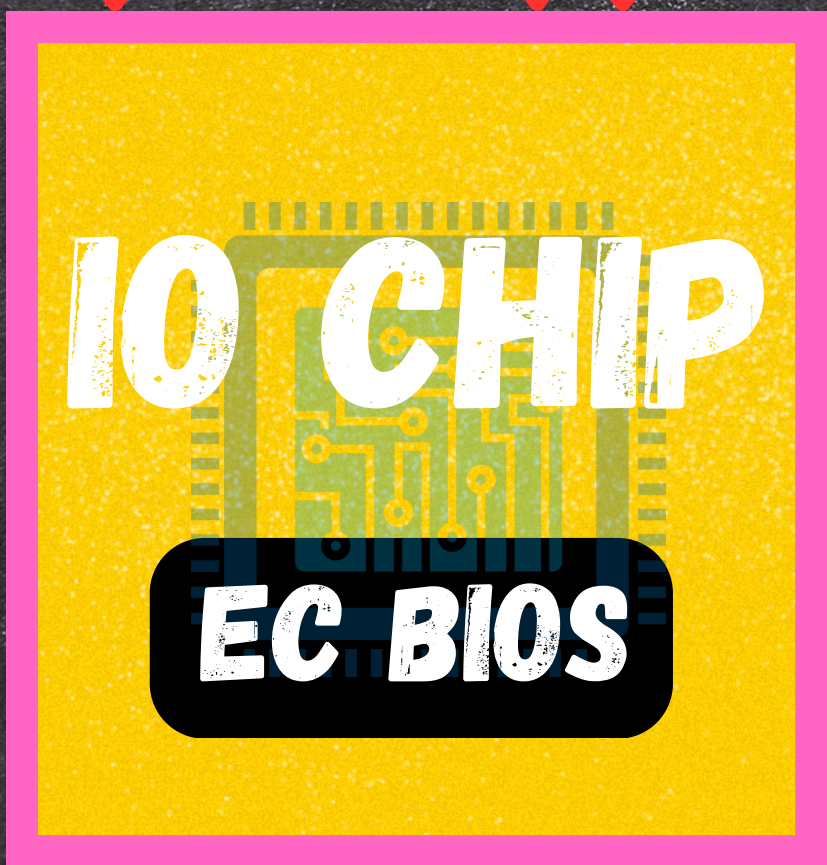


DRAMRST#

- ALL VOLTAGE OF RAM SLOT
- RAM IC POWER GOOD
- RAM DETECTION (SDA/SCL)
- DRAMPWROK

RTC_VCC EC_RST

3.3V LDO



5V LDO

EC_ON/S5_ON/ALW_ON

CS#

DO

CLK

DI

B
I
O
S

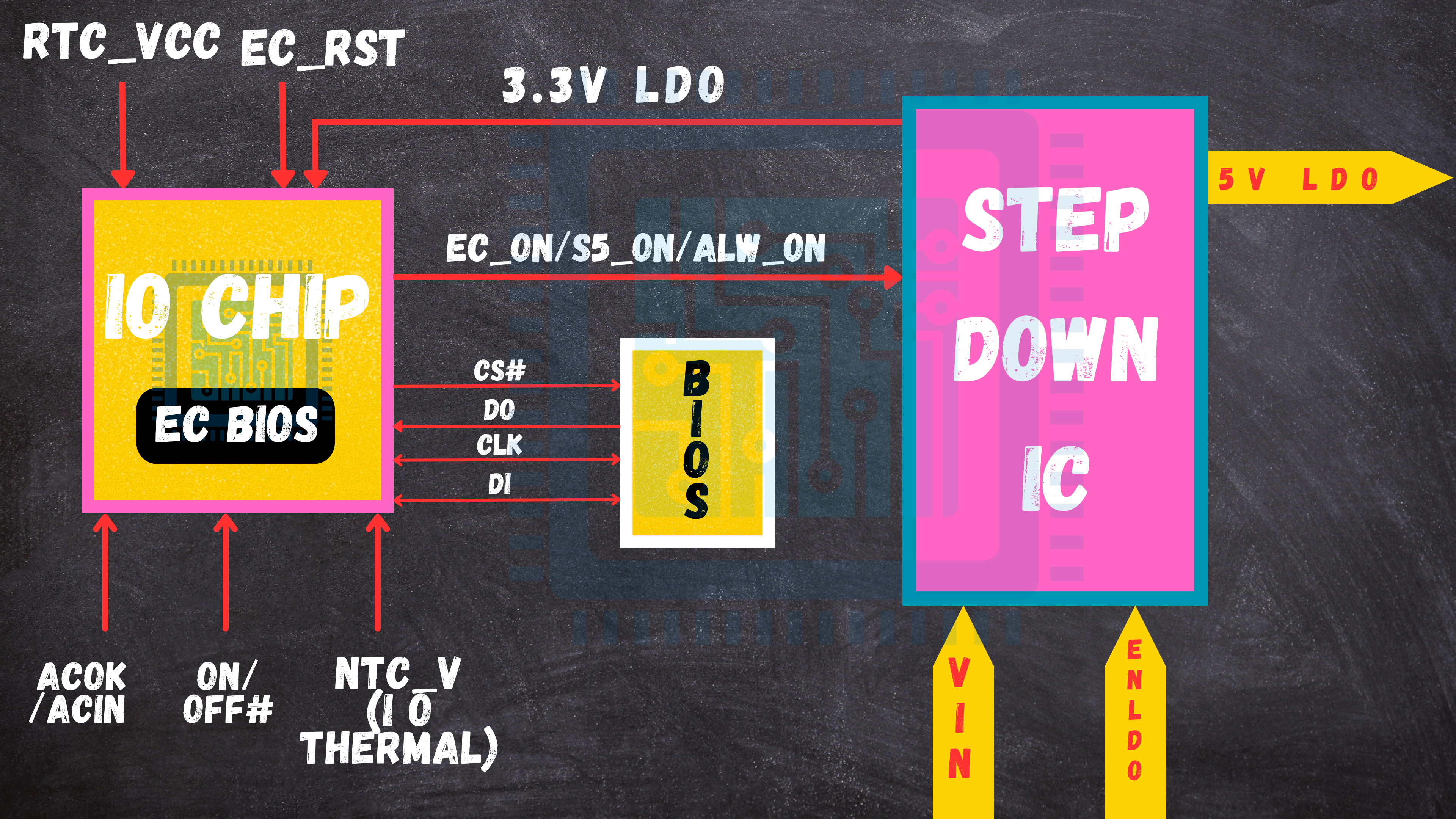
ACOK
/ACIN

ON/
OFF#

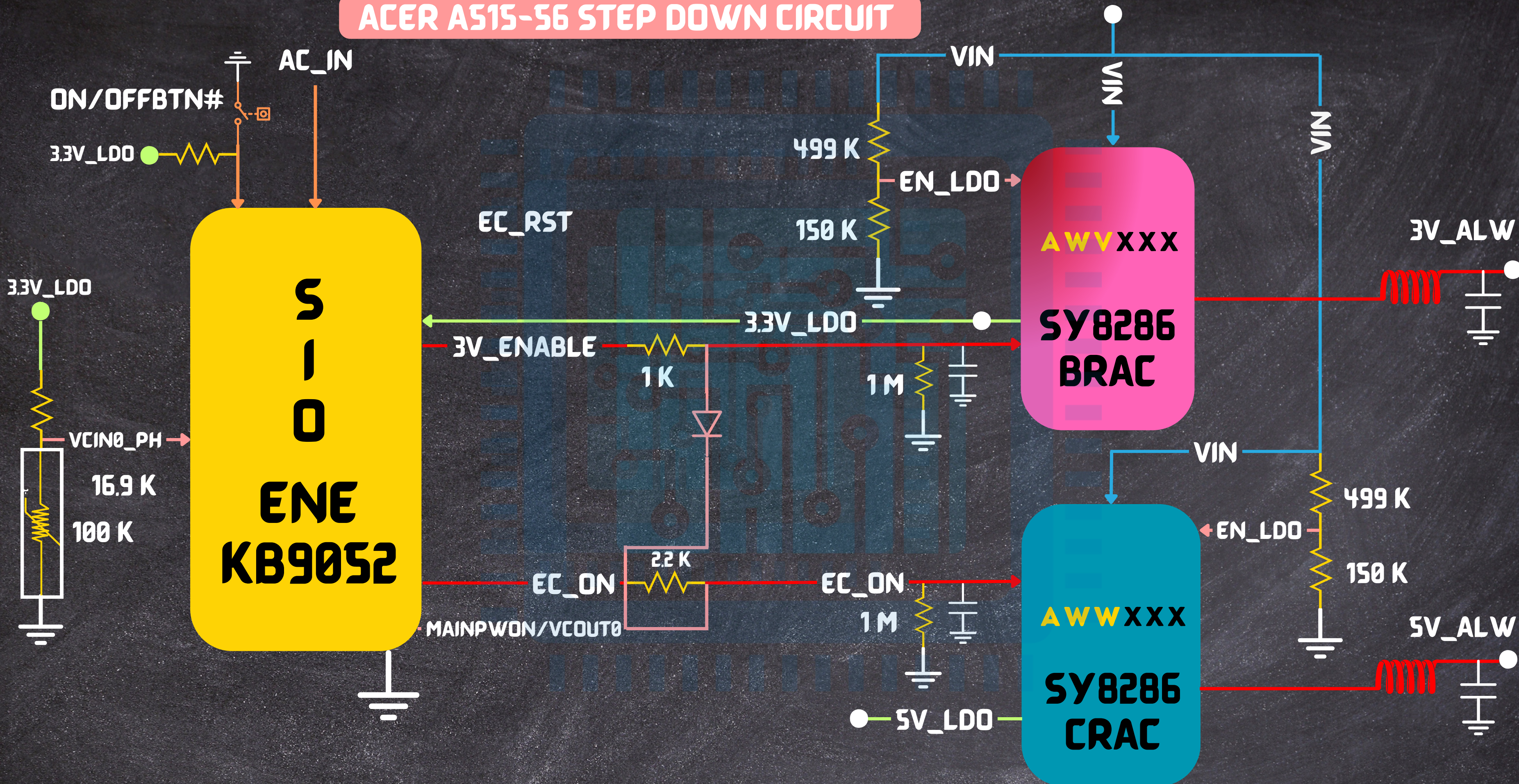
NTC_V
(I \bar{O}
THERMAL)

V
I
N

E
N
L
D
O



11TH GENERATION LA-K091P ACER A515-56 STEP DOWN CIRCUIT



3.3V_LDO

100K

10K

PCH

PM_RSMRST#_R

PCH_RSMRST#_R

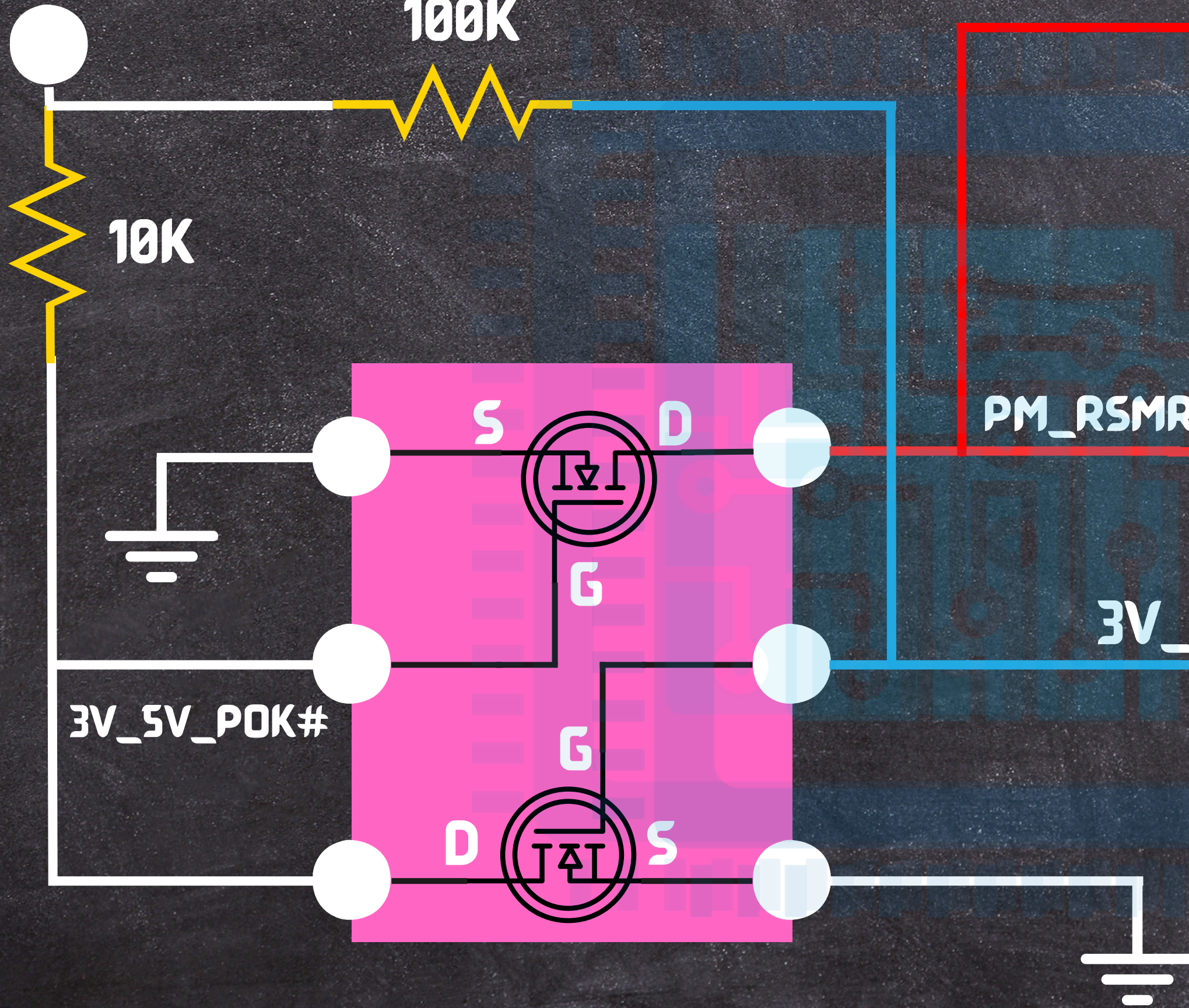
SIO

1K

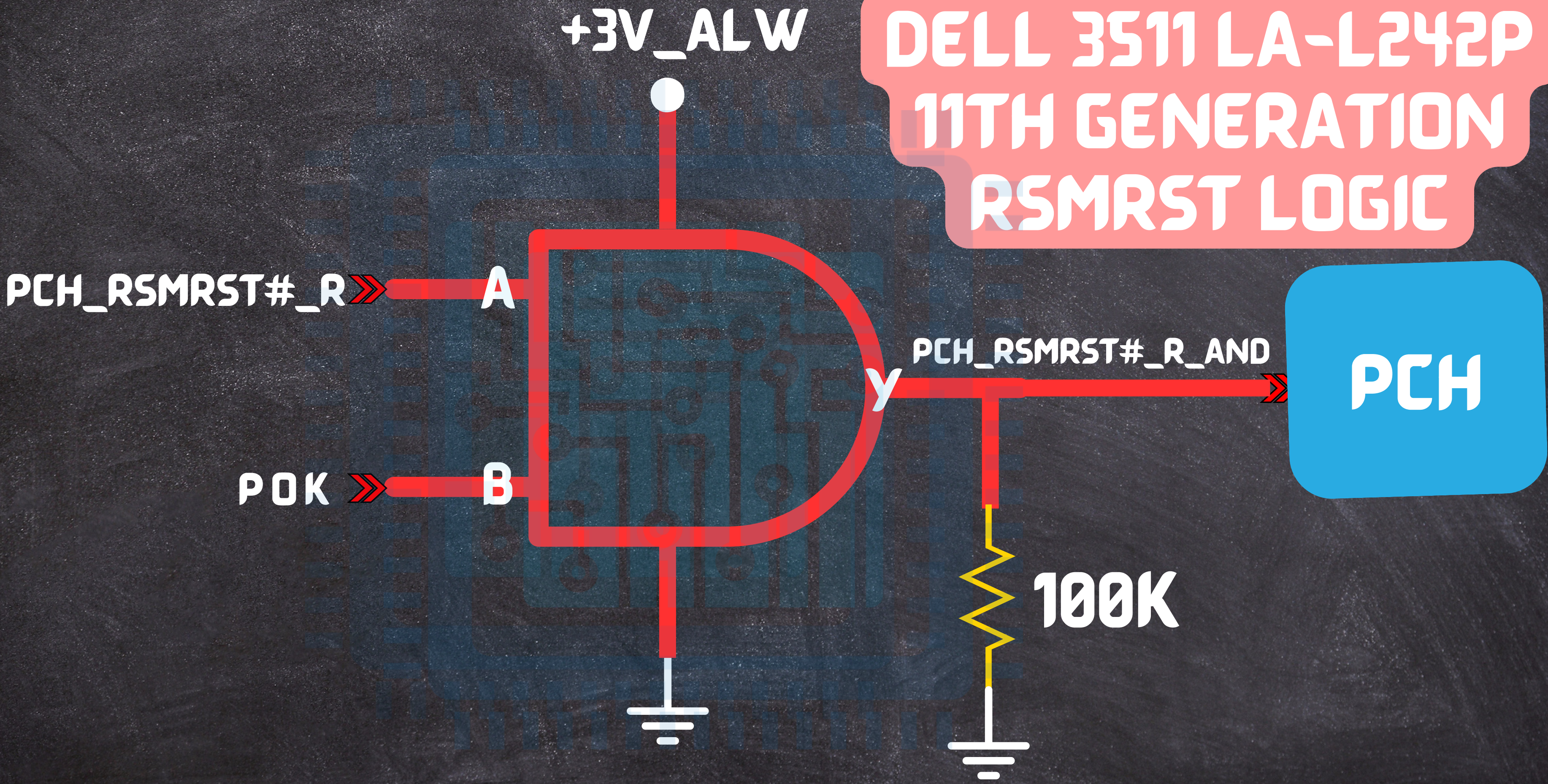
3V_5V_POK

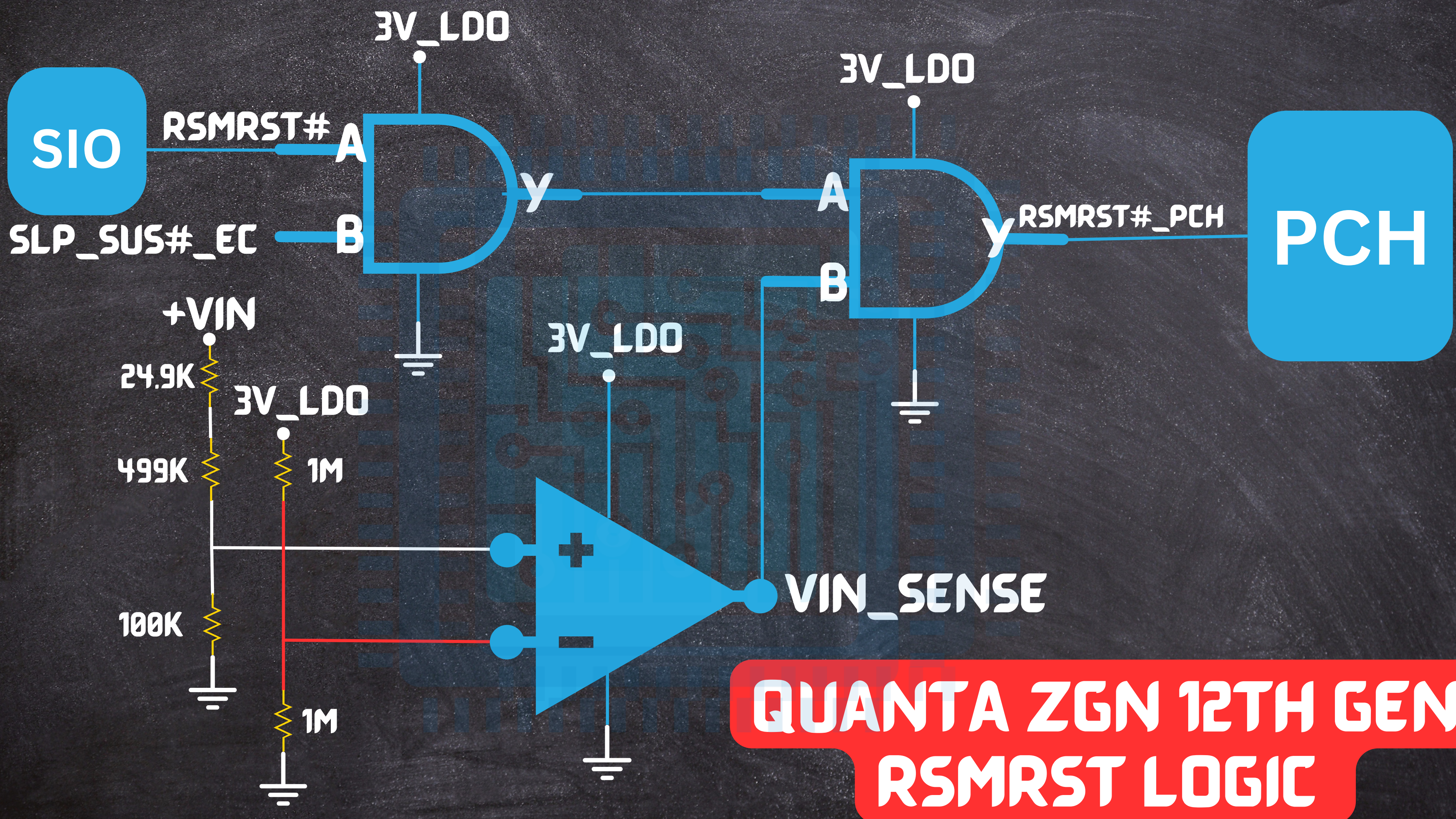
3V_5V_POK#

DELL_WISTRON
RSMRST LOGIC
5 TO 11TH GEN



DELL 3511 LA-L242P 11TH GENERATION RSMRST LOGIC





**QUANTA ZGN 12TH GEN
RSMRST LOGIC**

LATEST GENERATION STEP DOWN IC CODING

SY8208
BQNC

MSXXX

3.3 VOLT

10 PIN

SY8208
CQNC

MTXXX

5 VOLT

10 PIN

SY8206
BQNC

NDXXX

3.3 VOLT

10 PIN

SY8206
CQNC

NEXXX

5 VOLT

10 PIN

SYX198
BQNC

RFXXX

3.3 VOLT

10 PIN

011-4395520
Gurgaon #50
Sachin Kataria
+91 9818381039
Ravi
+91 9910779211
Laptop Resources Centre
All Laptop Motherboards, BGA Chips, SIO, IC, Flux,
Soldering Balls, Cooling Paste, Thermal Pad, DSO, Hot Gun,
DC PowerSupply, SIO Programmer, Bios Programmer
Available
B-15/2, Deepali Building, 92, Nehru Place, New
Delhi
Delhi 110028
Email: rcmk2011@hotmail.com

LATEST GENERATION STEP DOWN IC CODING

SYX198
CQNC

RGXXX

5 VOLT

10 PIN

SY8286
BRAC

AWVXXX

3.3 VOLT

20 PIN

SY8286
CRAC

AWWXXX

5 VOLT

20 PIN

SY8288
BRAC

BABXXX

3.3 VOLT

20 PIN

SY8288
CRAC

BACXXX

5 VOLT

20 PIN

011-41895500 Sachin Kataria
Gurgaon-122002 +91 9818381039

Ravi
+91 9910779211

Laptop Resources Centre

All Laptop Motherboards, BGA Chips, SIO, IC, Flux,
Soldering Balls, Cooling Paste, Thermal Pad, DSO, Hot Gun,
DC PowerSupply, SIO Programmer, Bios Programmer
Available

B-15/2, Deepali Building, 92, Nehru Place, New
Delhi-110019
sachin@lrc2011@hotmail.com

LATEST GENERATION STEP DOWN IC CODING

S Y 8 2 7 0
C T M C

B T X X X X

5 VOLT

13 PIN

N B
6 7 0

A D Z D

3.3 VOLT

16 PIN

N B
6 6 9

A E V D

5 VOLT

16 PIN

R T

7 2 9 0 A

3 B

3.3 VOLT

16 PIN

R T

7 2 9 1 A / B

3 9 / 4 M

5 / 5.1 VOLT

16 PIN

011-41395520
Gagan #520

Sachin Kataria
+91 9818381039
Ravi
+91 9910779211

Laptop Resources Centre

All Laptop Motherboards, BGA Chips, SIO, IC, Flux, Soldering Balls, Cooling Paste, Thermal Pad, DSO, Hot Gun, DC PowerSupply, SIO Programmer, Bios Programmer Available. Imported Refurbished Laptop's also Available.

B-15/2, Deepa Building, 92, Nehru Place, New Delhi-110019
sachinejmk2011@hotmail.com

LATEST GENERATION STEP DOWN IC CODING

S Y 8 3 8 6
B R H C

Qqa XXX

3.3 VOLT

16 PIN

S Y 8 3 8 8
C R H C

rMB XXX

5 VOLT

16 PIN

R T
6 3 1 6 B

QRXXX

3.3 VOLT

12 PIN

R T
6 3 1 8 C

QUXXX

5 VOLT

12 PIN

R T
6 2 5 6 B

L 8

3.3 VOLT

12 PIN

011-41395520
Gagan #520
Sachin Kataria
+91 9818381039
Ravi
+91 9910779211
Laptop Resources Centre
All Laptop Motherboards, BGA Chips, SIO, IC, Flux, Soldering Balls, Cooling Paste, Thermal Pad, DSO, Hot Gun, DC PowerSupply, SIO Programmer, Bios Programmer Available
Imported Refurbished Laptop's also Available
B-15/2, Deepan Building, 92, Nehru Place, New Delhi-110019
sachinejmk2011@hotmail.com

LATEST GENERATION STEP DOWN IC CODING

RT

6 2 5 6 C

L9

5 VOLT

12 PIN

NB

6 7 9

APAX

5 VOLT

12 PIN

NB

6 8 0

ALVX

3.3 VOLT

12 PIN

JW

5 0 6 8 B

JW

5 0 6 8 B

3.3 VOLT

20 PIN

JW

5 0 6 8 C

JW

5 0 6 8 C

5 VOLT

20 PIN

LATEST GENERATION STEP DOWN IC CODING

S Y X 1 9 6
B Q N C

R I X X X

3.3 VOLT

10 PIN

S Y X 1 9 6
C Q N C

R J X X X

5 VOLT

10 PIN

L V 6 2 2 8
C G Q U F

M J = X X

5 VOLT

12 PIN

S Y 8 3 8 8 C 3
R H C

3 A C X X

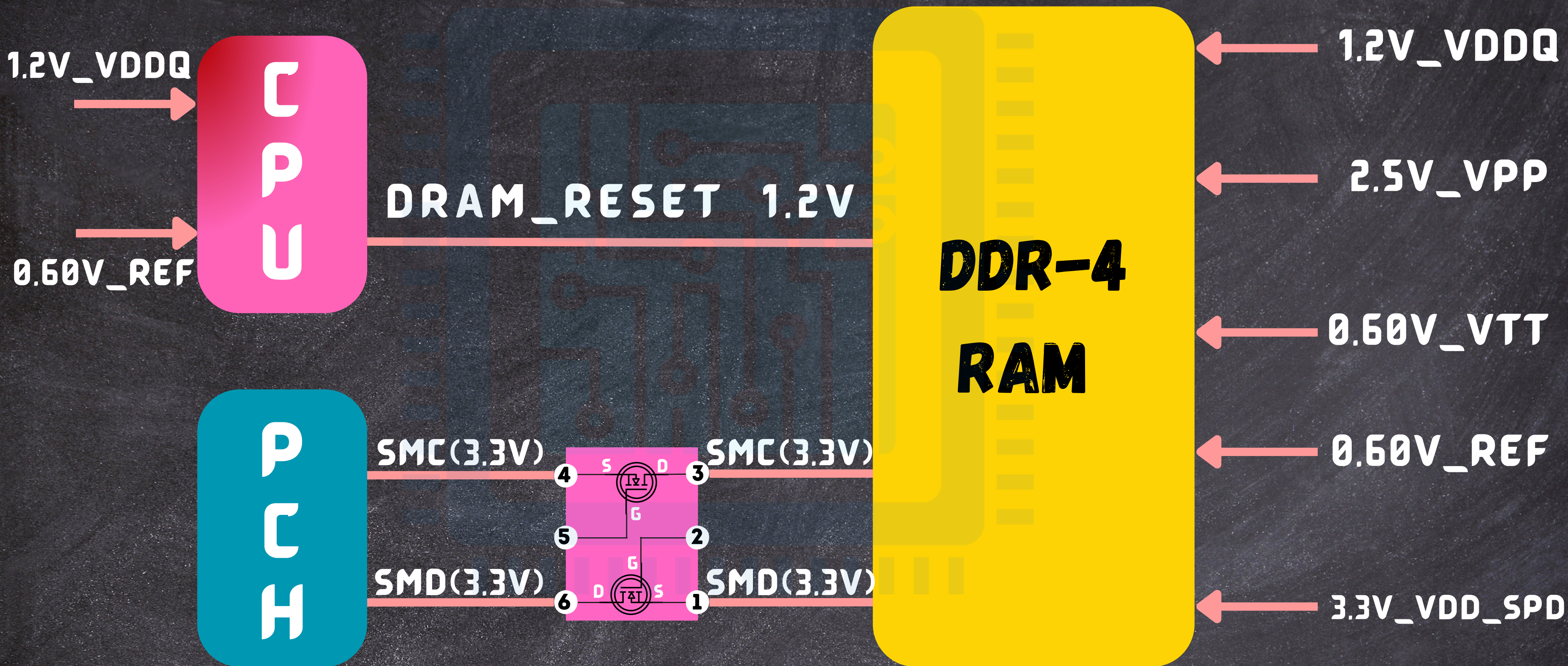
5 VOLT

16 PIN

RAM SLOT BASIC TESTING CHART

SL NO.	VOLTAGE/SIGNAL	DDR-3 204 PINS	DDR-3L 204 PINS	DDR-4 260 PINS	DDR-5 266 PINS
1	VPP	X	X	2.5V (PIN#257/259)	X
2	VDDQ	1.5V(PIN# 75)	1.35V(PIN#75)	1.2V(PIN#12)	5V(PIN#1/3)
3	VTT	0.75V(PIN#203/204)	0.67V(PIN#203/204)	0.60V(PIN#258)	X
4	VREF_DQ	0.75V (PIN#1)	0.67V (PIN#1)	X	X
5	VREF_CA	0.75V (PIN#126)	0.67V (PIN#126)	0.60V (PIN#164)	X
6	VDD_SPD	3.3V (PIN#199)	3.3V (PIN#199)	3.3V (PIN#255)	X
7	SDA	3.3V (PIN#200)	3.3V (PIN#200)	3.3V (PIN#254)	1.8V (PIN#6)
8	SCL	3.3V (PIN#202)	3.3V (PIN#202)	3.3V (PIN#253)	1.8V (PIN#4)
9	DRAM_RESET	1.5V (PIN#30)	1.35V (PIN#30)	1.2V (PIN#108)	1.1V/1.2V (PIN#163)
10	DRAM_POWER_EN	X	X	X	3.3V (PIN#8)
11	DRAM_PWR_GOOD	X	X	X	3.3V (PIN#7)

DDR-4 MEMORY CIRCUIT DESIGN 6TH TO 11TH GENERATION



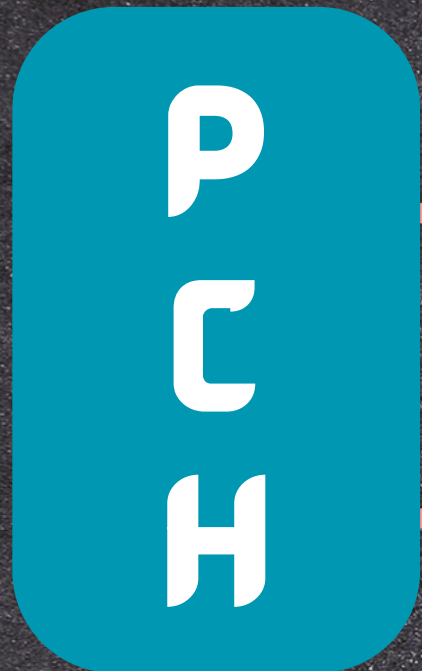
DDR-5 MEMORY CIRCUIT DESIGN

12TH GENERATION

1.1V/1.2V CPU_VDDQ

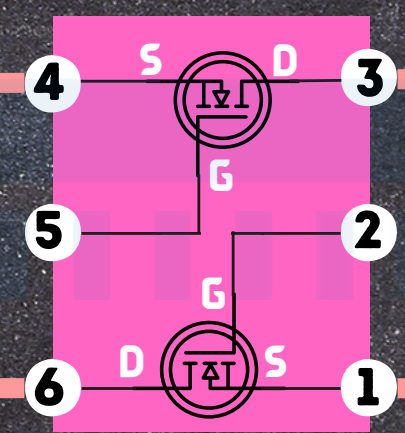


DRAM_RESET 1.1/1.2V
CPU_VDDQ



SMC

1.8V/3.3V



SMC

SMD

SMD



5V_VIN_BULK

DRAM_PWR_EN

DRAM_PG

VDD_SPD
1.8V/3.3V

1.8V_LDO

1.1V_LDO

1.1V_VDD

1.1V_VDDQ

1.8V_VPP

DDR-5 RAM

NO VPP

NO VTT

NO REF

VOLTAGE SEQUENCE CHART

SL NO.	1ST GEN ARRANDALE	2ND/3RD GENERATION (SANDYBRIDGE/ IVYBRIDGE)	4TH/5TH GENERATION (HASWELL/ BROADWELL)	6TH/7TH/8TH/9TH/10TH GENERATION (SKYLAKE/KABYLAKE- U/H, KABYLAKE-R, WHISKYLAKE, COFFEELAKE-U/H, COFFEELAKE-R, COMETLAKE)	10TH/11TH GENERATION (ICELAKE / TIGER LAKE)	12TH GENERATION (ALDERLAKE)
1	RTC_VCC	RTC_VCC	RTC_VCC	RTC_VCC	RTC_VCC	RTC_VCC
2	X	X	X	TBT_VBUS 5V	TBT_VBUS 5V	TBT_VBUS 5V
3	X	X	X	TBT_LDO 3.3V/1.8V	TBT_LDO 3.3V/1.8V	TBT_LDO 3.3V/1.8V
4	X	X	X	CHG_VIN_20V/SDC_IN	CHG_VIN_20V/SDC_IN	CHG_VIN_20V/SDC_IN
5	19V	19V	19V/13V*	19V/13V*	19V/13V*	19V/13V*
6	3.3V ALW	3.3V ALW	3.3V ALW	3.3V ALW	3.3V ALW	3.3V ALW
7	5V ALW	5V ALW	5V ALW	5V ALW	5V ALW	5V ALW

011-41395520
Gagan #520

Sachin Kataria
9818381039

Ravi
9910779211

Laptop Resources Centre

All Laptop Motherboards, BGA Chips, SIO, IC, Flux, Soldering Balls, Cooling Paste, Thermal Pad, LSO, Hot Gun, DC Power Supply, SIO Programmer, BIOS Programmer, Available Imported Refurbished Laptop's also Available

B-15/2, Deepali Building, 92, Nehru Place, New

Delhi-110019

VOLTAGE SEQUENCE CHART

SL NO.	1ST GEN ARRANDALE	2ND/3RD GENERATION (SANDYBRIDGE/ IVYBRIDGE)	4TH/5TH GENERATION (HASWELL/ BROADWELL)	6TH/7TH/8TH/9TH/10TH GENERATION (SKYLAKE/KABYLAKE-U/H, KABYLAKE-R, WHISKYLAKE, COFFEELAKE-U/H, COFFEELAKE-R, COMETLAKE)	10TH/11TH GENERATION (ICELAKE / TIGER LAKE)	12TH GENERATION (ALDERLAKE)
8	15V ALW*	15V ALW*	15V ALW*	X	X	X
9	19VSB (COMPAL)*	19VSB (COMPAL)*	X	X	X	X
10	X	X	X	1.8V ALW	1.8V ALW	1.8V ALW
11	X	X	X	X	VCC1.05_OUT_PCH	VCC1.05_OUT_PCH
12	X	X	X	X	VCC1.05_OUT_FET	VCC1.05_OUT_FET
13	X	X	X	1V ALW	1.8V VCCIN_AUX	1.8V VCCIN_AUX
14	X	X	3.3V PCH (COMPAL)*	3.3V PCH (COMPAL)*	3.3V PCH (COMPAL)*	3.3V PCH (COMPAL)*

VOLTAGE SEQUENCE CHART

SL NO.	1ST GEN ARRANDALE	2ND/3RD GENERATION (SANDYBRIDGE/I VYBRIDGE)	4TH/5TH GENERA TION (HASWE LL/BRAO DWELL)	6TH/7TH/8TH/9TH/10TH GENERATION (SKYLAKE/KABYLAKE-U/H, KABYLAKE-R, WHISKYLAKE, COFFEELAKE-U/H, COFFEELAKE-R, COMETLAKE)	10TH/11TH GENERATION (ICELAKE / TIGER LAKE)	12TH GENERATION (ALDERLAKE)
22	X	X	X	1V VCCIO	1.05V VCCIO*	X
23	X	X	X	1V VCCSTG	1V VCCSTG	X
24	X	X	X	1.8V S0*	X	X
25	X	X	X	1.2V S0*	1.2V S0*	X
26	1.5V_CPU_VDDQ	1.5V_CPU_VDDQ	X	X	X	X
27	1.8V S0	1.8V S0	X	X	X	X
28	X	1.5V S0*	1.5V S0*	X	X	X

All Laptop Motherboards, Chips, SIO, IC, Flex
 Solder Balls, Cooling Paste, Thermal Pad, DSO, Hot Gun
 DC PowerSupply, SIO Programmer, Bios Programmer
 Available Imported Refurbished Laptop's also Available
 B-15/2, Deepali Building, 92, Nehru Place, New
 Delhi-110019 sachinejmk2011@hotmail.com

VOLTAGE SEQUENCE CHART

SL NO.	1ST GEN ARRANDALE	2ND/3RD GENERATION (SANDYBRIDGE/I VYBRIDGE)	4TH/5TH GENERATION (HASWELL/BRAO DWELL)	6TH/7TH/8TH/9TH/ 10TH GENERATION (SKYLAKE/KABYLA KE-U/H, KABYLAKE- R, WHISKYLAKE, COFFEELAKE-U/H, COFFEELAKE-R, COMETLAKE	10TH/11TH GENERATION (ICELAKE / TIGER LAKE)	12TH GENERATION (ALDERLAKE)
29	1.05V PCH CORE*	X	X	X	X	X
30	1.05V VTT/VCCP	1.05V VTT/VCCP	1.05V VTT/VCCP	X	X	X
31	0.75V RAM VTT	0.75V RAM VTT	0.67V RAM VTT	0.60V RAM VTT	0.60V RAM VTT	X
32	X	VCCSA	X	VCCSA	X	X
33	GFX CORE	X	X	X	X	X
34	CPU CORE	CPU CORE	CPU CORE	CPU CORE (VCCIN)	CPU CORE (VCCIN)	CPU CORE (VCCIN)
35	X	GFX CORE	X	GFX CORE (VCC_GT)	X	GFX CORE (VCC_GT)

011-41395520
Gagan #520

Sachin Kataria
+91 9818381039

Ravi
+91 9910779211

Laptop Resources Centre

All Laptop Motherboards, BGA Chips, SIO, IC, Flux, Soldering Balls, Cooling Fan, Thermal Pad, DSO, Hot Gun, DC PowerSupply, SIO Programmer, Bios Programmer, Available Imported Refurbished Laptop also Available

B-15/2, Deepali Building, 92, Nehru Place, New Delhi-110019
sachin@laptopresourcescentre.com
+91 9910779211

A ROUGH UNDERSTANDING OF THE POWER SUPPLY RESISTANCES FOR INTEL PROCESSORS AND SOCS

4TH/5TH
GENERATION

SL NO.	PART NUMBER/GENERATION	CPU	VCC_CORE	REFERENCE MODEL
1	SR1EK I3-4005U	HASWELL-U	128	LA-C701P
2	SR16Q I3-4010U	HASWELL-U	62.4	QUANTA LZ9
3	SR1EF I5-4210U	HASWELL-U	85	LA-B162P
4	SR1EF I5-4210U	HASWELL-U	144.9	NM-A091
5	SR16M I5-4250U	HASWELL-U	96	APPLE 820-3437-B
6	SR16Z I7-4500U	HASWELL-U	47	ASUS X550LC
7	SR1Q8 I7-4720HQ	HASWELL	16.4	MS-17591
8	SR23Y I5-5200U	BROADWELL-U	87.8	LA-B991P
9	SR23Y I5-5200U	BROADWELL-U	41.7	NM-A681

NOTE: MAXIMUM READING BASED ON DIODE MODE

A ROUGH UNDERSTANDING OF THE POWER SUPPLY RESISTANCES FOR INTEL PROCESSORS AND SOC'S 6TH GENERATION

SL NO.	PART NUMBER/GEN	CPU	VCC_CORE	VCC_GT	VCC_SA	REFERENCE
1	SR2JG I3-6006U	SKYLAKE-U	2.2	1.2	4.2	NM-B241
2	SR2JG I3-6006U	SKYLAKE-U	4	1.9	6.9	LV115SK
3	SR2UW I3-6006U	SKYLAKE-U	3.6	3.2	9	LA-E791P
4	SR2UW I3-6006U	SKYLAKE-U	4.2	4.1	8	X541UVK
5	SR2EY I5-6200U	SKYLAKE-U	3.1	3.7	9.2	ASUS UX303UB
6	SR2F0 I5-6300U	SKYLAKE-U	6.7	6.8	14.9	LA-C581P
7	SR2EZ I7-6500U	SKYLAKE-U	9.6	9.8	20.4	MIHAWK MB
8	SR2FP I5-6300HQ	SKYLAKE-H	2	3.2	11.2	QUANTA G37A
9	SR2FP I5-6300HQ	SKYLAKE-H	2.5	5	12	QUANTA AM9A
10	SR2FQ I7-6700HQ	SKYLAKE-H	5.8	9.4	33.7	ASUS GL552VW

A ROUGH UNDERSTANDING OF THE POWER SUPPLY RESISTANCES FOR INTEL PROCESSORS AND SOC'S 7TH GENERATION

SL NO.	PART NUMBER/GEN	CPU	VCC_CORE	VCC_GT	VCC_SA	REFERENCE
1	QLM6 I5-7440HQ	KABY LAKE-H	3	5	17	QUANTA G75A
2	SR32S I5-7300HQ	KABY LAKE-H	3	6	16.2	NM-B191
3	SR32S I5-7300HQ	KABY LAKE-H	2.82	5.6	20.75	MS-16J91
4	SR32R I5-7440HQ	KABY LAKE-H	5.4	8.4	34.1	LA-E152P
5	SR32Q I7-7700HQ	KABY LAKE-H	1.3	2.6	7.75	LA-E892P
6	SR3LD I3-7020U	KABY LAKE-U	7.5	12	29.7	NM-B601
7	SR3LD I3-7020U	KABY LAKE-U	3.6	6.2	14.9	NM-B451
8	SR3LD I3-7020U	KABY LAKE-U	8.5	15.2	30.3	LA-E802P
9	SR3TK I3-7020U	KABY LAKE-U	10.8	8.9	23.7	NM-B244
10	SR343 I3-7100U	KABY LAKE-U	7	8.5	17.8	QUANTA ZAA

A ROUGH UNDERSTANDING OF THE POWER SUPPLY RESISTANCES FOR INTEL PROCESSORS AND SOC'S 8TH GENERATION

SL NO.	PART NUMBER/GEN	CPU	VCC_CORE	VCC_GT	VCC_SA	REFERENCE
1	SR3W0 I3-8130U	KABY LAKE-R	6.3	9.4	27.5	330S_KBL_MB_V06
2	SR3W0 I3-8130U	KABY LAKE-R	3.1	4.5	12	NM-B451
3	SR3W0 I3-8130U	KABY LAKE-R	4.2	6.9	16.8	G7A
4	SR3W0 I3-8130U	KABY LAKE-R	6.9	10.4	27.8	LA-H782P
5	SR3LA I5-8250U	KABY LAKE-R	4.8	8.5	19.4	NFL 17 GIANTS
6	SRD1V I3-8145U	WHISKEY LAKE-U	3.6	5.4	28.1	NM-C121
7	SRFFZ I3-8145U	WHISKEY LAKE-U	4.8	8.3	22.8	ASUS X409FB
8	SREJQ I5-8265U	WHISKEY LAKE-U	4.1	6.2	46.4	
9	SR3Z0 I5-8300H	COFFEE LAKE-H	2.6	5.8	20.2	NM-B671

NOTE: MAXIMUM READING BASED ON DIODE MODE

A ROUGH UNDERSTANDING OF THE POWER SUPPLY RESISTANCES FOR INTEL PROCESSORS AND SOC'S 9TH GENERATION

SL NO.	PART NUMBER/GEN	CPU	VCC_CORE	VCC_GT	VCC_SA	REFERENCE
1	SRF6X I5-9300H	COFFEE LAKE-H	2	4.2	15.8	LA-H501P
2	SRF6X I5-9300H	COFFEE LAKE-H	3.5	6.8	33	VULCAN17_N18P
3	SRFCR I5-9300H	COFFEE LAKE-H	1.5	3.7	10.2	G531GW
4	SRG26 I5-9300HF	COFFEE LAKE-H	0.67	NONE	6.8	NM-C361
5	SR3YY I7-8750H	COFFEE LAKE-H	2.8	5.7	18.7	DH5VF LA-F952P REV 1.0

NOTE: MAXIMUM READING BASED ON DIODE MODE

A ROUGH UNDERSTANDING OF THE POWER SUPPLY RESISTANCES FOR INTEL PROCESSORS AND SOC'S 10TH GENERATION

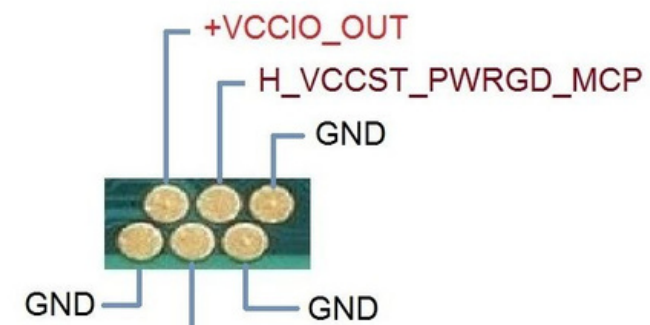
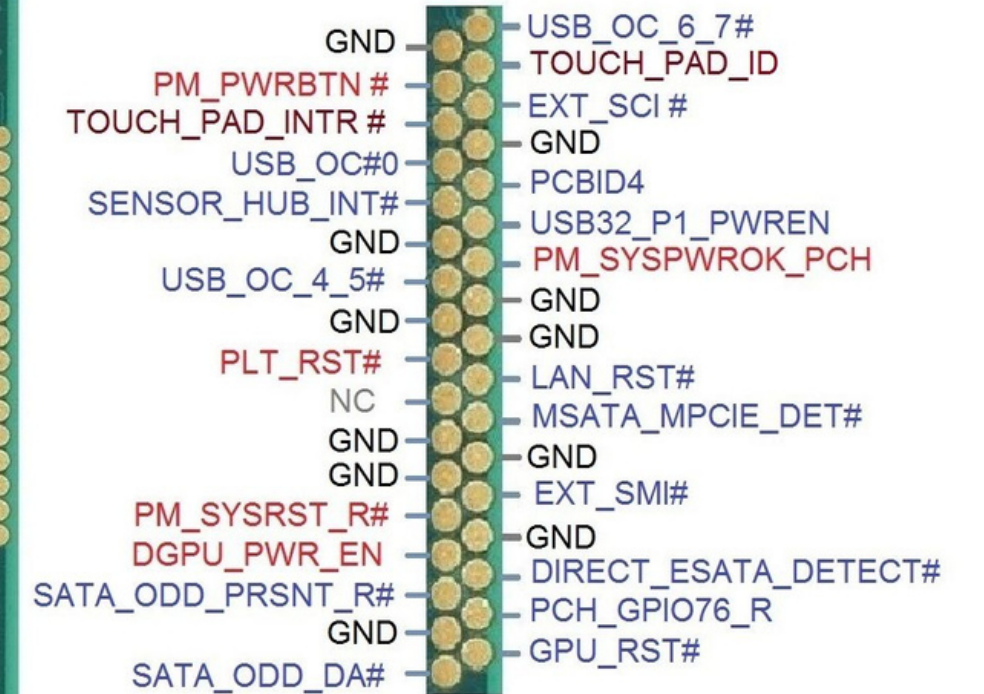
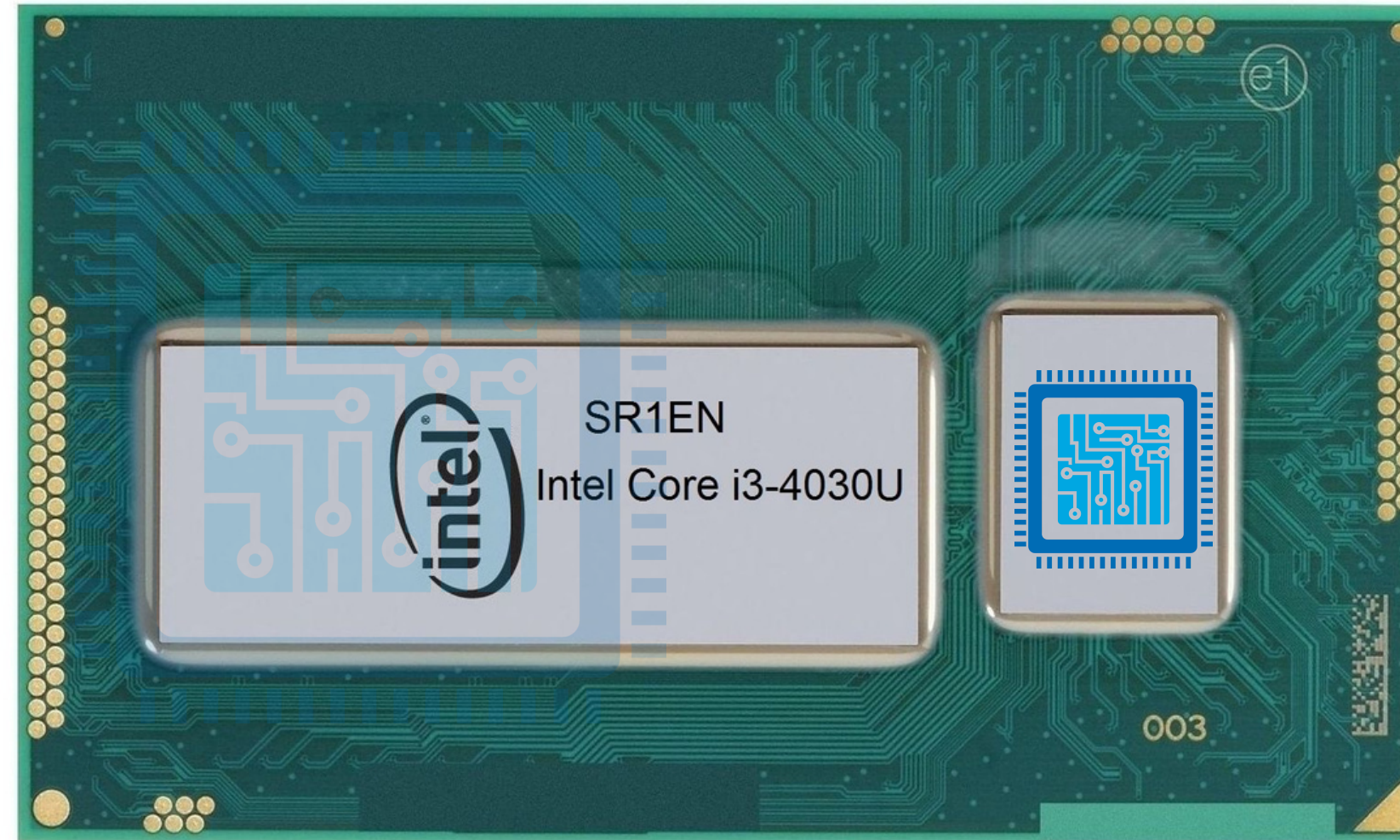
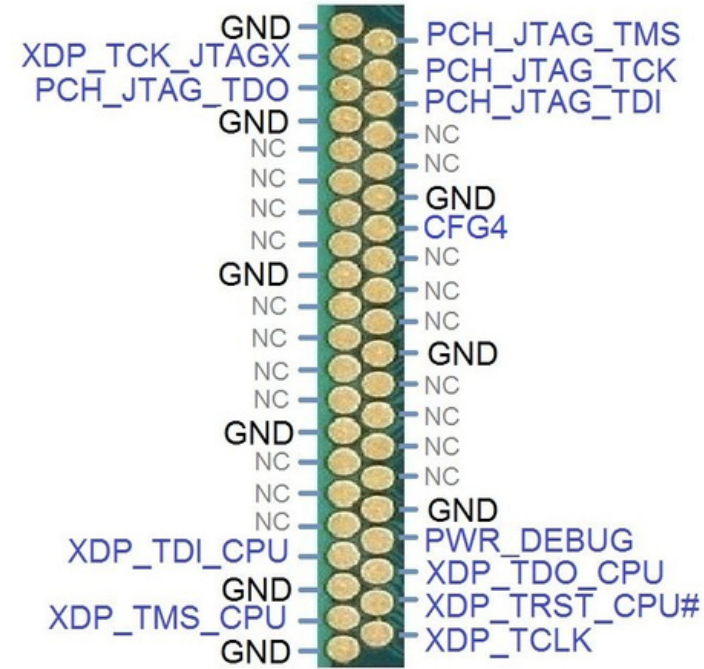
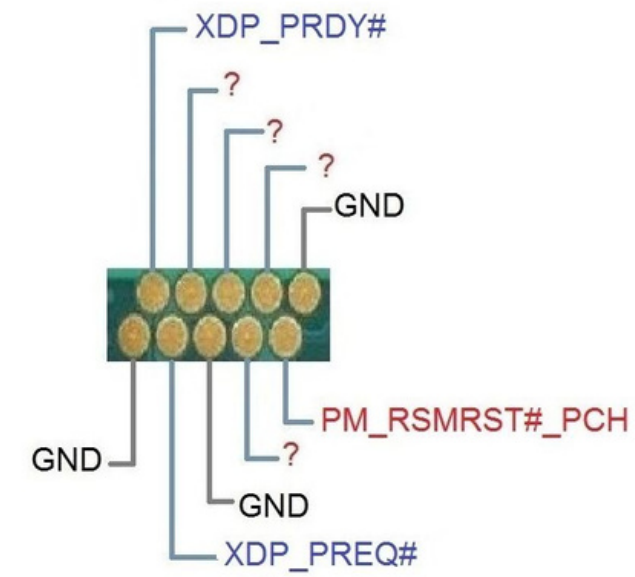
SL NO.	PART NUMBER/GEN	CPU	VCC_CORE	VCC_GT	VCC_SA	REFERENCE
1	SRGL0 I3-10110U	COMET LAKE-U	2	3.4	10.4	NM-C781
2	SRGL0 I3-10110U	COMET LAKE-U	6.5	11.3	35.9	DAH98MMB8D0
3	SRGL0 I3-10110U	COMET LAKE-U	3.3	5.6	27	LA-H791P
4	SRK3X I5-10200H	COMET LAKE-H	2	7.8	23.3	6-77-NH50DP00-D02
5	SRH84 I5-10300H	COMET LAKE-H	1.6	4.7	14.6	NM-C871
6	SRH84 I5-10300H	COMET LAKE-H	2	7.5	35	QUANTA G3JB
7	SRH84 I5-10300H	COMET LAKE-H	1.5	5.5	18	QUANTA G3JC
8	SRH8Q I7-10750H	COMET LAKE-H	1.7	5.3	18.3	ASUS G512L G532LWS
9	SRH8Q I7-10750H	COMET LAKE-H	1	3.4	11.3	ASUS G512LI

A ROUGH UNDERSTANDING OF THE POWER SUPPLY RESISTANCES FOR INTEL PROCESSORS AND SOC'S 11TH GENERATION

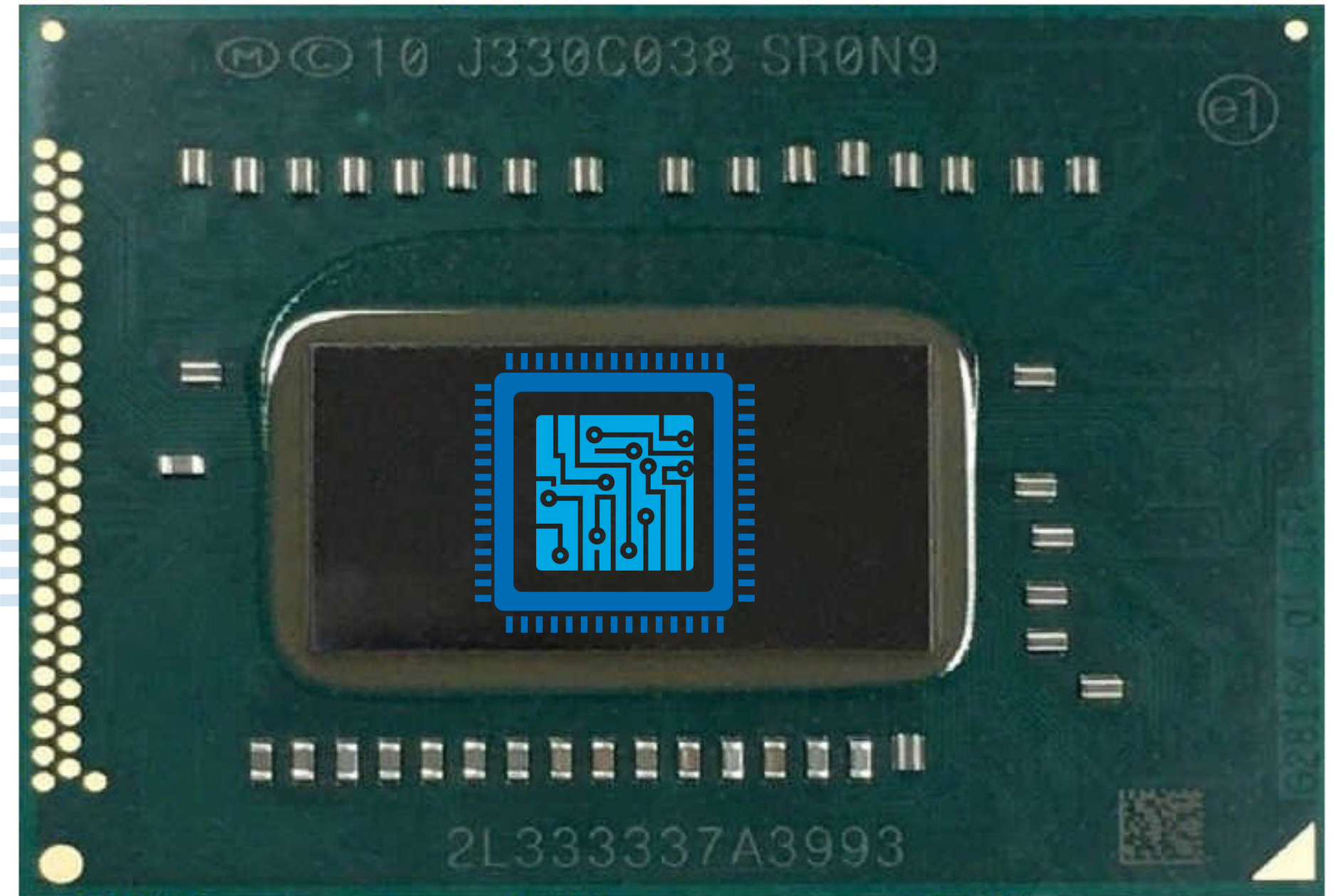
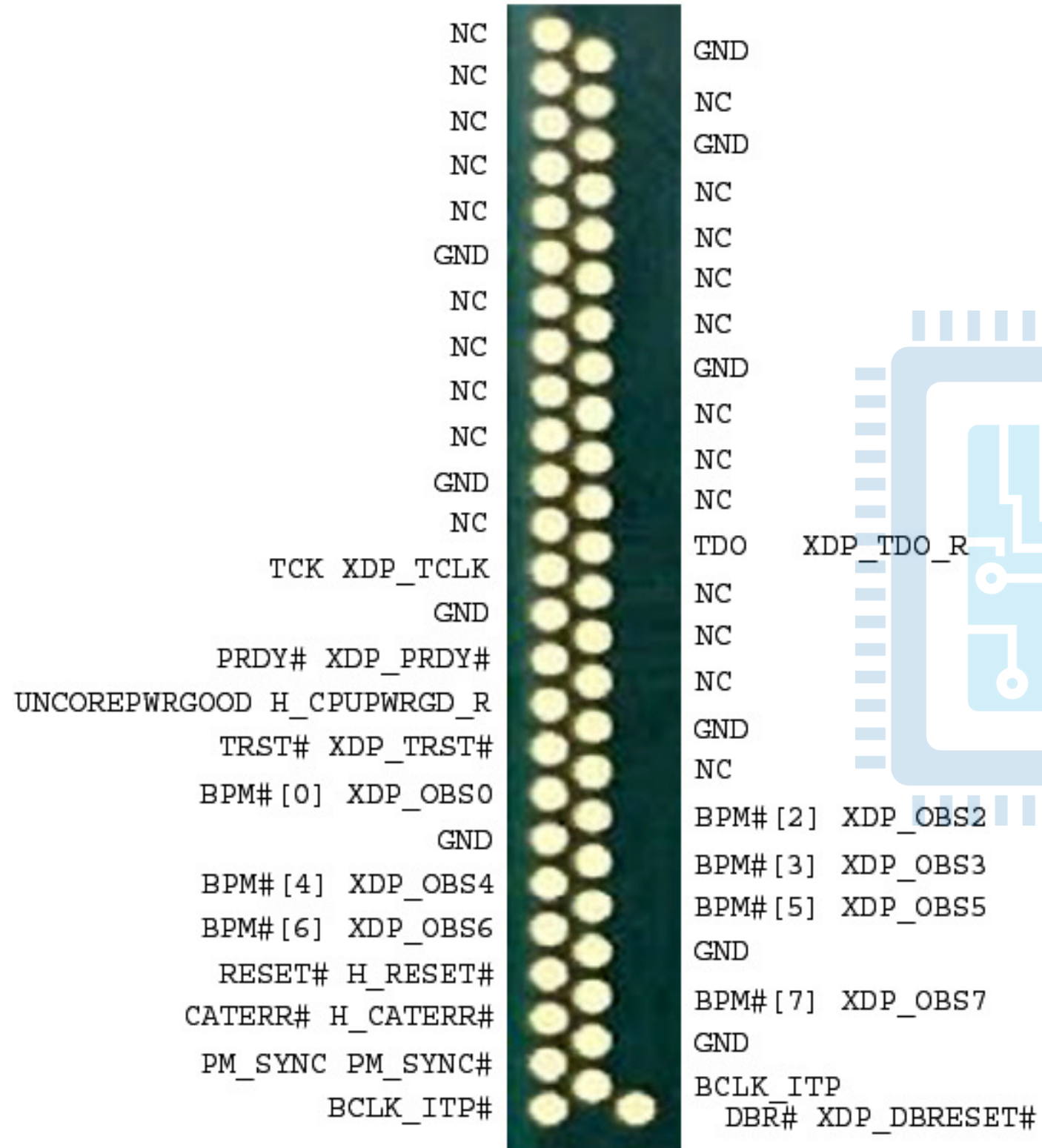
SL NO.	PART NUMBER/GEN	CPU	VCC_IN	VCCIN_AUX	REFERENCE
1	SRGKF I3-1005G1	ICE LAKE-U	211	425	NM-D031
2	SRGKF I3-1005G1	ICE LAKE-U	255	425	DA0P5DMB8C0
3	SRGKF I3-1005G1	ICE LAKE-U	105	290	GP152 LA-J951P
4	SRG0V I5-1038NG7	ICE LAKE-U	36.3	198.5	APPLE 820-01949-07
5	SRK08 I3-1115G4	TIGER LAKE UP3	67.8	203.9	NM-D474
6	SRK08 I3-1115G4	TIGER LAKE UP3	35	107	QUANTA 0P5H
7	SRK08 I3-1115G4	TIGER LAKE UP3	12	50	QUANTA H98D
8	SRK04 I5-1135G7	TIGER LAKE UP3	54	185	NM-D011
9	SRK01 I7-1165G7	TIGER LAKE UP3	11.8	42	LA-K051P

ASUS X555LD

REV 3.3



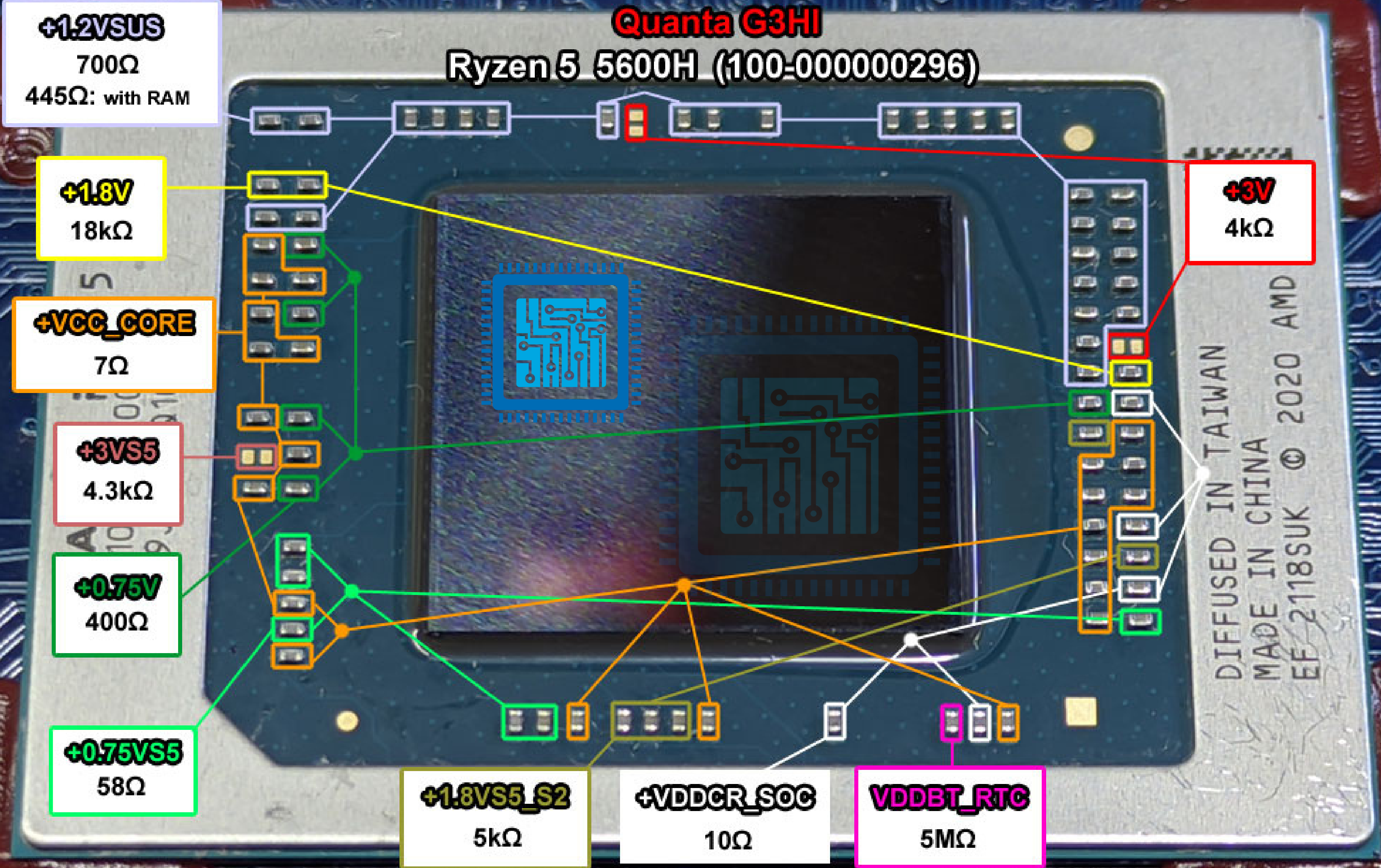
ASUS X550CC



SR0N9 (Intel Core i3-3217U)

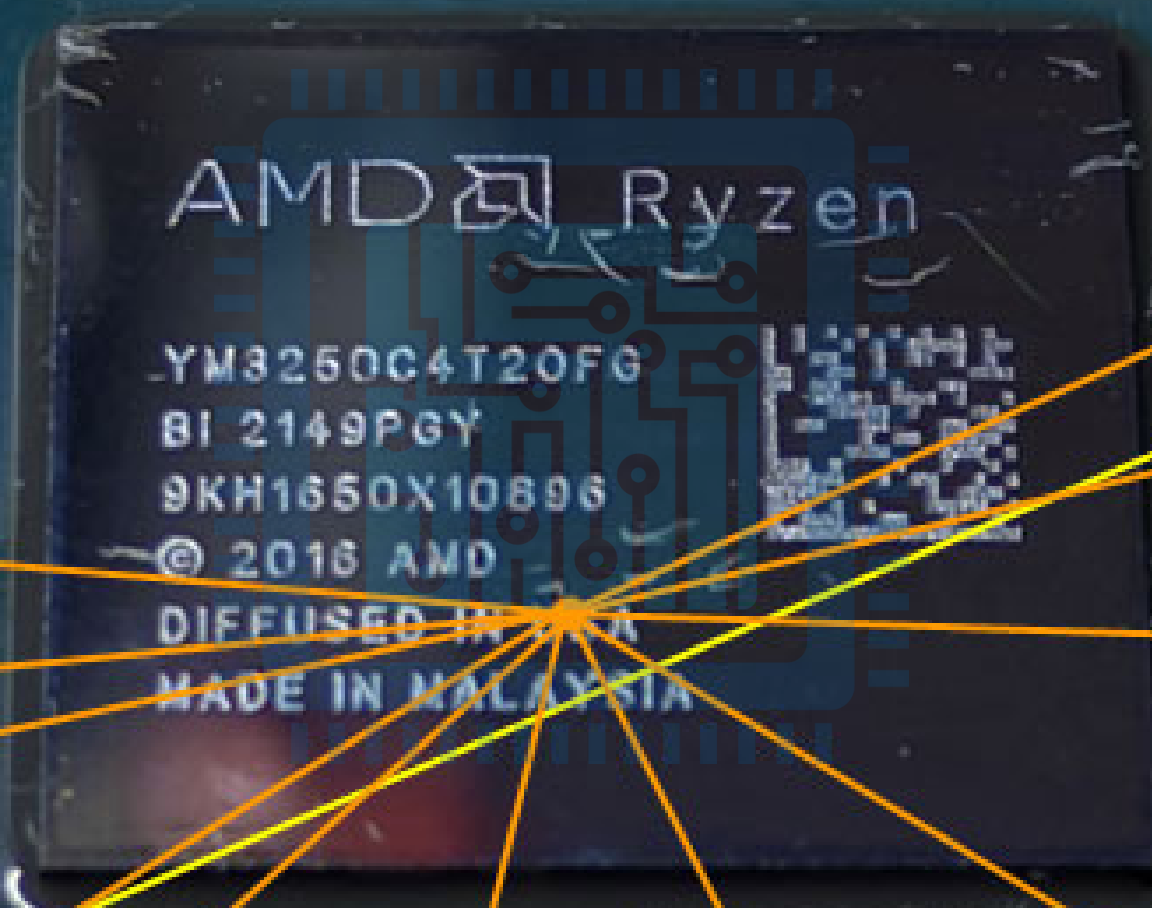
Quanta G3HI

Ryzen 5 5600H (100-000000296)



Quanta 0P5F

Ryzen 3 3250C (YM325CC4T2OFG)



+1.2VSUS
OL
182.3Ω: with RAM

+VDDCR_SOC
3.9Ω

+VCC_CORE
4.4Ω

+1.8V
3.5kΩ

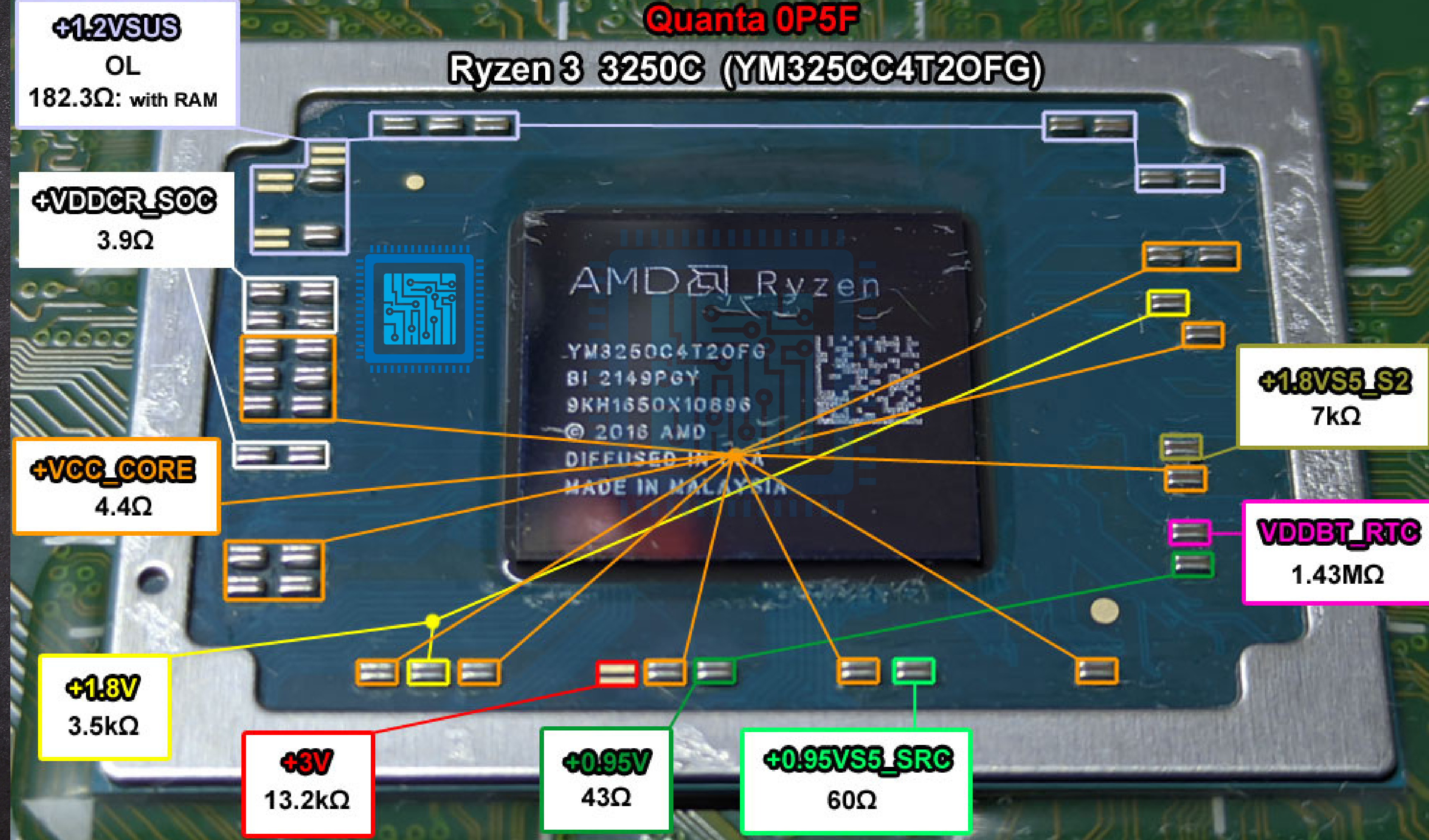
+3V
13.2kΩ

+0.95V
43Ω

+0.95VS5_SRC
60Ω

+1.8VS5_S2
7kΩ

VDDBT_RTC
1.43MΩ



IMPORTANT TERM

- » HP SERIAL NUMBER → 8CG72813FZ → 10 DIGIT
- » HP PRODUCT ID SAMPLE → 2FK60PA#ACJ → 7 DIGIT
- » DELL SERVICE TAG SAMPLE → HZ2VF73 → 7 DIGIT
- » LENOVO SERIAL NUMBER SAMPLE → PF2G52Q4 → 8 DIGIT
- » ASUS SERIAL NUMBER SAMPLE → M4N0CX07M59615E → 15 DIGIT
- » ACER SERIAL NUMBER SAMPLE → NXA1J5G00F120096683400 → 22 DIGIT
- » DELL SERVICE TAG FINDING TERM → PPID/#TAG/TAG
- » HP SERIAL NUMBER FINDING TERM → MODEL NUMBER/MUD
- » ASUS SERIAL NUMBER FINDING TERM → GPNV
- » ACER SERIAL NUMBER FINDING TERM → MODEL NUMBER
- » HP/ACER VERSION FINDING TERM → BVDT/BID (BID CONCEPT)
- » OS KEY FINDING HEX VALUE → 01 00 00 00 00 00 00 00 01 00 00 00 00 00 00 00 10 00 00 00
- » ACER DMI INFORMATION FIND HEX TERM → 41636572FFFFFFFFFFFFFFFFFFFFFFFF